



# Glass Divider

The Sneeze Guard Company

Project Name: \_\_\_\_\_

Location: \_\_\_\_\_

Item #: \_\_\_\_\_ Qty: \_\_\_\_\_

Date: \_\_\_\_\_

Model: **C148**

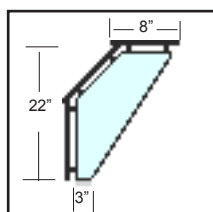
**Class:** Sneeze Guard - Full Service - ( vertical shield with top shelf )

Model C148 is part of the Crystalline Series featuring the elegant all glass look. The C148 Full Service (pass over) Sneeze Guard family is similar to the C144 family with the vertical front shield and 45° viewing shield and is characterized by the addition of a top shelf. These sneeze guards allow a bay size of 60" and up to a maximum of 84" with a support rib and is available in 1/4", 3/8", or 1/2" safety tempered glass. The C148 has four styles of crystal clear support which meet most any full service needs. Multiple bay units have a continuous smooth front shield and can be combined with the model C128 self service sneeze guard to make a seamless transition from full service to self service. Custom sizes available. Always review your sneeze guard plans with your health department.

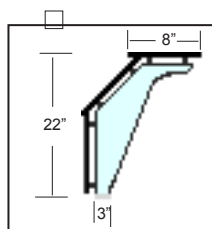
- Crystal Clear 1/2" Safety Tempered Glass Supports
- Large Bay Length (Up to 84" between supports)
- Optional Removable Internal Shelves
- Four Standard Support Styles
- Chrome Finish Hardware



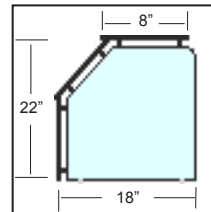
Support Options:



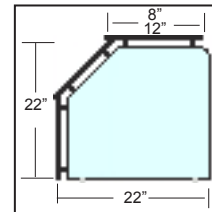
Open



Sculpture



Deep  
18" Depth



Extended  
22" Depth

## Options & Accessories

### Glass Options

- ☐ 1/4", 3/8", or 1/2" Glass
- ☐ Crystal Clear Glass
- ☐ Removable Mid-Shelf (11", 17", 21")
- ☐ Radius Corners
- ☐ Frosted Logo
- ☐ Frosted Glass
- ☐ Support Rib (Bay > 60")

### Mounting Options

- ☐ Tab Feet
- ☐ U-Channel
- ☐ Flanged Boot

### Accessories

- ☐ LED Edge Lights
- ☐ LED Lights
- ☐ Logo Lights
- ☐ Food Warmer Power Drop
- ☐ Food Warmer Mount



The "Deep" or "Extended" supports are required as end supports on NSF certified sneeze guards. The "Open", and "Sculpture" supports can be used for internal supports in multi-bay configurations

