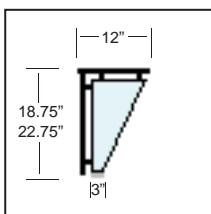


Model C140(straight) and C140A (curved) are part of the Crystalline Series of all glass sneeze guards. The C140 is for use on straight counters while the C140A is used on curved counters. These Full Service pass-over sneeze guards are characterized by their straight up front shield and top shelf. These sneeze guards allow a maximum bay size of 84", eliminating the need for middle support posts to span most steam or prep tables. Multiple bay units have a continuous smooth front shield and top shelf. Removable mid shelves are optional.

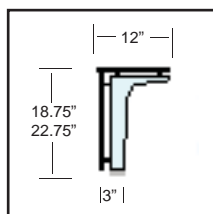
- Crystal Clear 1/2" Safety Tempered Glass Supports
- Two Standard Heights 18-3/4" and 22-3/4"
- Three Standard Depths, 12", 18", and 22"
- Large Bay Size (up to 84" between supports)
- Optional Removable Internal Shelves
- Five Standard Support Styles



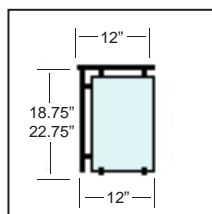
Support Options:



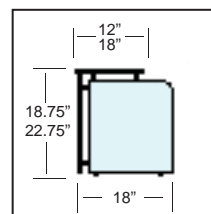
Open



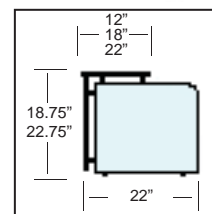
Sculpture



Closed
12" Depth



Deep
18" Depth



Extended
22" Depth

Options & Accessories

Glass Options

- ☐ 3/8" Crystal Clear Top Shelf
- ☐ Removable Mid-Shelf (11", 17", 21")
- ☐ Radius Corners
- ☐ Frosted Logo
- ☐ Frosted glass

Accessories

- ☐ Heat Strips
- ☐ LED Lights
- ☐ Heat Strip / Light Combination

Mounting Options

- ☐ Tab Feet
- ☐ Slim Legs
- ☐ Saddle

Metal Finish

- ☐ Chrome
- ☐ Powder Coat Color
- ☐ Other

RAL# _____



The "Deep" or "Extended" supports are required as end supports on NSF certified sneeze guards. The "Open", "Closed", and "Sculpture" supports can be used for internal supports in multi-bay configurations

