



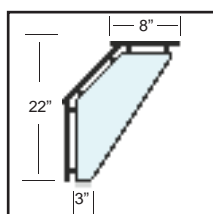
Model: C148 & C148A **Class:** Sneeze Guard - Full Service

The C148 sneeze guard family is similar to the C144 family except it has an additional top shelf. The C148 sneeze guard is used on straight counters where the C148A works on curved counters. These full service (pass over) sneeze guards are characterized by the clean look of the vertical front shield, 45° viewing shield and top shelf. The maximum bay size for the family is 60 inches. The C148 has four styles of crystal clear support which meet any full service needs. Multiple bays units have a continuous smooth front shield and can be combined with the model C124 self service sneeze guard to make a seamless transition from full service to self service.

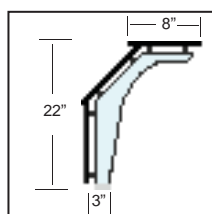
- Crystal Clear 1/2" Safety Tempered Glass Supports
- Large bay length (up to 60" between supports)
- Large Bay Size (up to 60" between supports)
- Optional Removable Internal Shelves
- Four Standard Support Styles
- Straight or curved counters



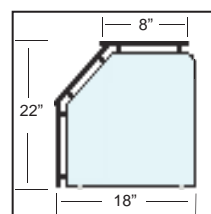
Support Options:



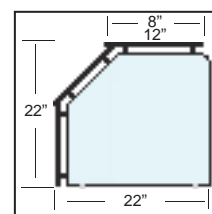
Open



Sculpture



Deep
18" Depth



Extended
22" Depth

Options & Accessories

Glass Options

- ☐ 3/8" Crystal Clear Shield & Top Shelf
- ☐ Removable Mid-Shelf (11", 17", 21")
- ☐ Radius Corners
- ☐ Frosted Logo
- ☐ Frosted glass

Accessories

- ☐ Heat Strips
- ☐ LED Lights
- ☐ Heat Strip / Light Combination

Mounting Options

- ☐ Tab Feet
- ☐ Slim Legs
- ☐ Saddle

Metal Finish

- ☐ Chrome
- ☐ Powder Coat Color
- ☐ Other

RAL# _____



The "Deep" or "Extended" supports are required as end supports on NSF certified sneeze guards. The "Open", and "Sculpture" supports can be used for internal supports in multi-bay configurations

